



TYRESOLES[®]

Retreading Redefined

Retread and Repair facility for Off-The-Road tyres



Repairing Tubeless Radials

REMA
TIP
TOP



Tyresoles uses the famed Rema Tip Top German system for repair of tubeless earthmovers tyres. Located in over 140 countries throughout the world, Rema Tip Top, offers highest quality systems and services in tyre repairs, belt splicing, pulley lagging and industrial linings. Equipped with a Rema Tip Top Thermo press, this facility can repair cuts upto 12 inches in diameter.

Tyres that would need to be scrapped in the past can now be put back in service in tubeless conditions.

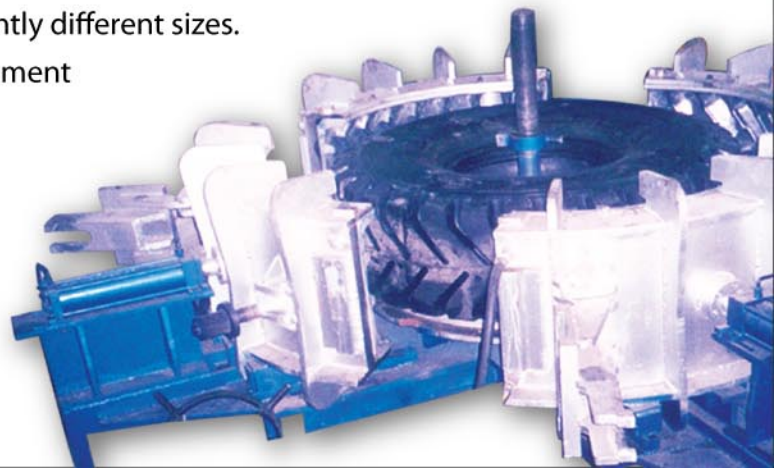


Retreading Radials

Tyresoles is the only retreader in India to retread radial tyres in 6 segmented moulds for radial earthmover tyres. These tyres are retreaded with state-of-the-art machinery designed to suit international specifications and tread designs.

Often different manufacturers of tyres do have slightly different sizes. And the retreader needs to have appropriate equipment to process all these tyres.

Radial tyres present a significant challenge for repairs and retreading since radial casings do not expand or contract like bias ply tyres. And placing radial tyres in bias ply moulds will damage the tyres.



Earthmoving Equipments

Dumpers:



• 12.00 x 24



• 18.00 x 25 E4 • 18.00 x 33



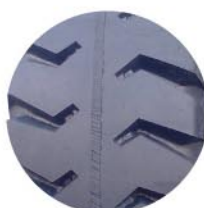
• 18.00 R 25 E4 • 18.00 R 33



• 21.00 x 35



• 24.00 x 35



• 24.00 x 49

Articulated Dumpers:



• 26.50 R 25 (Radial)

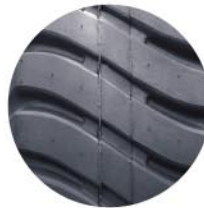


• 29.50 R 25 (Radial)

Loaders:



• 14.00 x 25 • 17.50 x 25
• 20.50 x 25



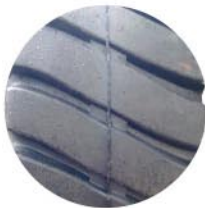
• 23.50 x 25 L4



• 23.50 R 25



• 26.50 x 25



• 29.50 x 29



• 35/65 x 33

Graders:



• 13.00 x 24



• 14.00 x 24

Material Handling Equipments:

Cranes



• 14.00 x 20



• 14.00 x 24 • 14.00 x 25
• 16.00 x 24 • 17.50 x 25
• 20.50 x 25



• 14.00 R 24
• 16.00 R 25 • 20.50 R 25

Reach Stackers:



• 18.00 x 25 Port

Tyresoles, the company

Tyresoles (India) Private Limited, India's largest retreader, has consolidated its production facilities in Belgaum with three state-of-the-art plants, dedicated to truck, tractor and earthmover tyres, with installed capacity to 250,000 tyres per annum.

The Sah and Sanghi group company, has always focused on customers, developing products and processes to meet newer and newer requirements. It is the only retreading company in India to retread tyres from auto-rickshaw sizes to 125 ton dumper tyres. Tyresoles retreads both bias-ply and radial tyres in the conventional and the precured process.

Tyresoles works closely with its customers to develop new products to meet changing requirements. It has also developed specialised rubber compounds to match vehicle operating conditions in India. It has also established an ERP system in 1999 which allows it to track tyres online and give customers accurate information about their tyres.

Tyresoles has a sales team of 80 people and a dealer network of 200 outlets serving customers in Karnataka, Maharashtra and Goa for truck and tractor tyres. The company also caters to needs of customers with earth moving equipment all over India.



Retreading is Recycling

New tyres are made from natural rubber, synthetic rubber, carbon black, nylon tyre cord and processing chemicals. All these raw materials, except natural rubber, are petroleum derivatives. By retreading one truck tyre you save 20 litres of crude oil. Last year Tyresoles saved the country's 40 lakh litres of crude oil.

In the west, tyres are dumped in landfills, which became serious fire hazards. Retreading also helps solve this problem of disposing worn out tyres.

Retreads are safe and save you money.

A new tyre consists of the casing or the body and the tread. The casing is an incredibly complicated flexible pressure vessel. It is designed to withstand high temperatures, severe impacts from the road, and heavy pressure. 70% of the cost of the new tyre goes into making the casing. Only 30% of the cost goes into the tread. If you throw out a tyre when the tread is worn, you are wasting 70% of your investment. By retreading, you save this money.