

18 managers from Tyresoles undergo Managerial Effectiveness Training



Tyresoles move for bio-fuel as an eco-friendly measure



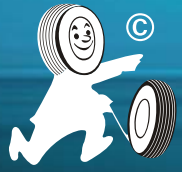
Yoga for Senior Executives of Tyresoles



40 more employees under Operational Excellence umbrella



Mr. Mahajan leads Mumbai team on a 100% growth path



TYRESOLES[®]
Retreading Redefined



18 MANAGERS FROM TYRESOLES UNDERGO MANAGERIAL EFFECTIVENESS TRAINING :



Hero mind mines, a reputed training wing of hero group, conducted a two days training programme on managerial effectiveness for top executives of tyresoles.

The programme held on 13th & 14th oct 06 was one of the most interactive & interesting training conducted so far.

The programme touched several key areas including leadership styles, communications, managerial skills in great detail. Role play & management games ensured that all participants were involved -enjoyed & understood the concept.

Tyresoles hope to reap benefit out of better managers who run the day to day show.

Tyresoles Parivar

Wishes you
a very

**happy
new
year**

2007

YOGA FOR SENIOR EXECUTIVES OF TYRESOLES



It was a never before event at tyresoles & a pleasant experience for around 20 strong senior executives of tyresoles.



As they underwent a two hour long yoga session on 14th October 06 at Navi Mumbai.

Conducted by experts in the field the executives found the inner peace & techniques to release themselves from the day to day stress.

The various "asanas" and valuable tips on dos & don'ts will go a long way in keeping them healthy & fit for the future challenges, felt most of the participants.

TYRESOLES MOVE FOR BIO-FUEL AS AN ECO-FRIENDLY MEASURE



Tyresoles in its quest to become more & more ecofriendly in its operations switched over to bio-fuel for curing the tyres. This noble step was taken to find an

alternative to furnace oil & diesel which was used till now.

This less polluting measure will also reduce curing cost by 30 % & will thus add to the cost efficiency as well.

The successful installation of biofuel boiler in goa in the month of October has lead the Belgaum unit to follow suit & the same will be installed in Belgaum by January 07.

40 MORE EMPLOYEES UNDER OPERATIONAL EXCELLENCE UMBRELLA

40 more employees from across the units & functional areas underwent 4 days grueling session on operational excellence from 8th to 11th Sept. 06 at Belgaum.

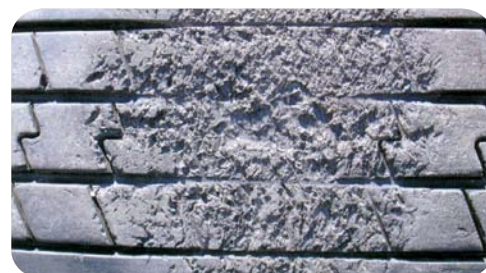
The third in its series this year, the programme conducted by the director Mr. Karun Sanghi & group production manager Mr. M. K. Bukhari was aimed at bringing in fundamental change in the mind sets of participants aimed at increased productivity.

A classic blend of theory & practical sessions ensured that the participants came out with flying colours with highly innovative ideas being implemented on the plant floor.

By the end of its last programme in this financial year, all the employees of tyresoles will be under the umbrella of excellence.



WHAT CAUSED THIS?



Answer: Next page

MR. MAHAJAN LEADS MUMBAI TEAM ON A 100% GROWTH PATH



PREMIUM TREADS LAUNCHED IN GOA & MUMBAI

Three new patterns were launched in the 3rd quarter, two in goa & one in mumbai.

While goa, known for its mining operations has introduced lug logger & z-lug patterns, mumbai was introduced with a premium pattern for trucks by the name- WHL212.

The treads which are expected to deliver mileage at par with new tyres are under the observations for the next three months after which the tread will be introduced to other markets as well.



Lug Logger
(Mining Special)



Z-Lug
(Highway Special)



WHL 212
(Highway Special)

Trucks / Trailors	LL	Z-LUG	Z-LUG	WHL	WHL
Tread Width (mm)	215	215	205	212	205
Tread Depth (mm)	16	16	16	17.5	16.5
Under Tread (mm)	3	3	3	3	3

TYRE QUIZ ANSWER

Opinion A: Damage was caused by a brake lock or skid.

Opinion B: Damage was caused when the tire sat in diesel fuel overnight.

Answer: Opinion A is correct. This type of damage is associated with a brake lock or skid as evidenced by the chunks of rubber that are missing. Petroleum damage typically causes the rubber to soften and would not result in any short edges or pieces of tread that are missing.

Advantages

Highly suitable for **over load operation**.

Most appropriate for **mining belt (Lug Logger)**.

Extra groove depth for **extra grip**.

Higher load withstanding ability due to higher tensile strength.

Lesser down-time due to longer tread life.



Tyresoles (India) Pvt. Ltd.
Devidayal Complex, Kanjurmarg (E), Mumbai - 400 042, INDIA.
Tel.: +91 22 2577 5849, 2578 4053, 2578 4063 • Fax: +91 22 2578 4059
E-mail: bombay@tyresoles.com • Website: www.tyresoles.com