

# Freedom from low mileage Freedom from ever-mounting tyre cost

## Introducing...

**A brand new series of treads specially designed to deliver higher mileage on Indian roads**

Dear Sir,

As India turns 67, Tyresoles, too, is celebrating its 67th year of customer service. Over the years we have built a legacy of innovation and excellence. Continuing this tradition we are pleased to offer you a brand new series of treads that are specifically designed to handle the most extreme of Indian road conditions.

These treads are made from high-quality compounds and have precision-engineered patterns, which lead to enhanced tread-life. They have been designed to deliver optimum mileage performance. Combined with our ability to retread tyres twice it offers you a significant reduction in tyre cost - less than 15p/km.

Together these treads cover a variety of applications. Choose the one that suits your area of operation best. Better still, let a Tyresoles Expert visit your facility to understand your needs and advise you about the treads to go with.

Your business is sure to benefit from Tyresoles' expertise. Do let us know of a convenient time to meet you. Call Nayana or Rekha on 022 - 25784053 / 25784063 or send an email to [sales@tyresoles.com](mailto:sales@tyresoles.com)

Regards,

Karun Sanghi  
Managing Director

 **TYRESOLES®**



Premium treads for bias ply tyres with super-rich synthetic compound to deliver mileage equivalent to new tyres\* :



**Tyresoles Super Lug**

(14 mm NSD.200/210/220 mm tread width)



**Tyresoles Super Rib**

(14 mm NSD.200/210/220 mm tread width)

\*vehicle- and position-specific / average for a batch of 10 tyres

Premium treads for radial tyres with special compound for radial tyre applications:



**Tyresoles Spectra**

(14 mm NSD.220/230/240 mm tread width)



**Tyresoles MTRL**

(14 mm NSD.220/230/240 mm tread width)

A new high-value tread specially engineered for bias ply tyres for standard applications:



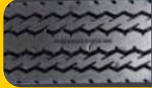
**Tyresoles Value Miler**

(12 mm NSD.205/215 mm tread width)

Please turn over for further details

# High-quality treads precision-engineered for better handling and mileage

**Premium treads for bias ply tyres with super-rich synthetic compound to deliver mileage equivalent to new tyres\*:**



**Tyresoles Super Rib**  
(14 mm NSD.200/210/220 mm tread width)

## Features:

- Tread pattern ideally suited for high-speed long-haul highway applications
- More land in tread for higher mileage performance
- Good abrasion resistance, lower rolling resistance and better cut resistance
- Anti-skid pattern offers better grip and traction, which leads to improved steering ability and safety
- Lower fuel consumption

## Application areas:

- Suitable for fitment on all wheel positions of single-/multi-axle buses, trucks, tankers under normal load conditions



**Tyresoles Super Lug**  
(14 mm NSD.200/210/220 mm tread width)

## Features:

- A wide and deep tread pattern designed to perform in all terrains
- Special groove design to facilitate ejection of stones and easy draining for better control and braking on dry and wet roads
- Wide robust shoulder blocks prevent irregular shoulder wear, tearing and chunking
- Better cut resistance and optimised land/sea ratio
- A wide footprint facilitates uniform pressure distribution, which leads to excellent traction and longer tread life
- Impact-resistant protecting belt provides rigidity to the tread area, which minimises belt failure and leads to enhanced tyre life

## Application areas:

- Suitable for fitment on rear wheels of single-/multi-axle buses, trucks, tankers under normal load conditions
- Suitable for long haul applications

\*vehicle- and position-specific / average for a batch of 10 tyres

**Premium treads for radial tyres with special compound for radial tyre applications:**



**Tyresoles Spectra**  
(14 mm NSD.220/230/240 mm tread width)

## Features:

- Premium high-performance tread with an innovative tread pattern
- Air vents to keep the tyre cool at highway speeds
- Four-rib highway pattern with a wider tread and more land in tread for higher mileage
- Specially designed grooves with multiple wall and twisted taper to facilitate easier ejection of stones for a longer tread life
- Specially designed grooves to facilitate easy draining
- Excellent steering ability for better safety

## Application areas:

- Suitable for fitment on all wheel positions of single-/multi-axle buses, trucks, tankers under normal load conditions



**Tyresoles MTRL**  
(14 mm NSD.220/230/240 mm tread width)

## Features:

- Scientifically designed tread blocks for excellent traction on all road surfaces
- Enhanced ground contact
- Higher Mileage Performance
- Better fuel efficiency

## Application areas:

- Suitable for fitment on all wheel positions of single-/multi-axle buses, trucks, tankers under normal load conditions

## A new high-value tread specially engineered for bias ply tyres for standard applications:



**Tyresoles Value Miler**  
(14 mm NSD.220/230/240 mm tread width)

## Application areas:

- Suitable for fitment on rear wheels of single-/multi-axle buses, trucks, tankers under normal load conditions
- Suitable for lightweight operation

## Features:

- Contour designed to give flat tread and stable contact on both dry and wet roads
- A flat tread profile results in uniform contact leading to even wear
- Better control and braking on all terrains, both in dry and wet conditions
- Better abrasion resistance
- Stress-free casing line results in negligible heat buildup, which facilitates high speed, longer tread life, and enhanced durability and retreadability